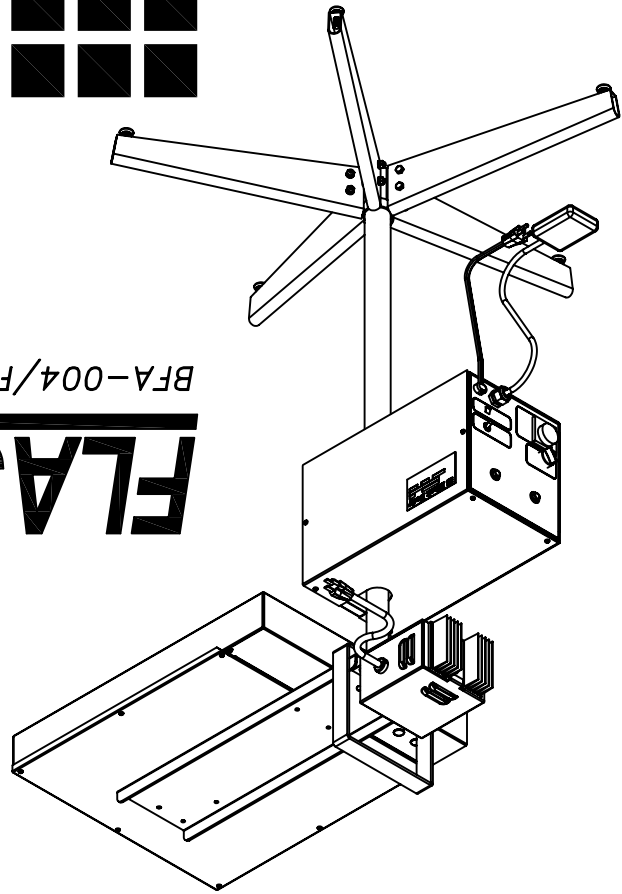


FLASH-A-MATIC™

BFA-004/FS ASSEMBLY



OPERATING INSTRUCTIONS

THE UNIT HAS TWO MODES OF OPERATION: 1) AUTOMATIC, 2) MANUAL

AUTOMATIC:

IN THIS MODE THE HEATER, WHEN SIGNALLED BY DEPRESSING THE FOOT PEDAL, WILL ROTATE 90° FROM REST AND THEN DELAY FOR AN ADJUSTABLE 0-10 MINUTES. AFTER THE SET DWELL TIME THE UNIT WILL AUTOMATICALLY RETURN TO THE REST POSITION UNTIL SIGNALLED AGAIN.

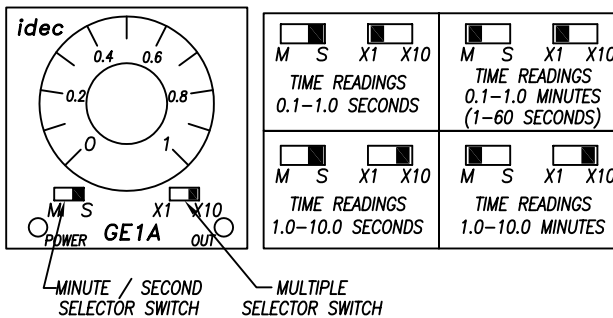
- 1) PUT AUTOMATIC/MANUAL TOGGLE SWITCH ON AUTOMATIC AND PUT ON/OFF TOGGLE TO THE ON POSITION.
- 2) SET THE ADJUSTABLE TIME DIAL TO THE DESIRED DELAY FROM 0-10MIN. (SEE TIMER SETTINGS)
- 3) YOU ARE NOW READY FOR AUTOMATIC OPERATION. A SIMPLE TAP OF THE FOOT PEDAL WILL BEGIN ONE AUTOMATIC CYCLE.

MANUAL

IN THIS MODE THE HEATER CAN BE MOVED 90° BACK TO START POSITION BY MANUALLY HOLDING DOWN THE FOOT PEDAL. THE MOVEMENT CAN BE STOPPED AT ANY POINT IN BETWEEN THE CYCLE BY LETTING OFF THE FOOT PEDAL. THE MOVEMENT IS THEN RESTARTED BY HOLDING DOWN THE FOOT PEDAL AGAIN.

- 1) PUT AUTOMATIC/MANUAL TOGGLE SWITCH ON MANUAL AND PUT ON/OFF TOGGLE AT ON POSITION.
- 2) YOU ARE NOW READY FOR MANUAL OPERATION. START AND CONTINUE MOVEMENT BY HOLDING DOWN ON THE FOOT PEDAL. STOP MOVEMENT BY LETTING OFF THE FOOT PEDAL.

TIMER SETTINGS



NOTE: THE FLASH-A-MATIC LEAVES THE FACTORY WITH THE TIMMER SET TO 1.0-10.0 SECONDS.

HEIGHT ADJUSTMENT

HEIGHT ADJUSTMENTS ARE MADE BY LOOSENING THE SET SCREW IN THE POLE ARM COLLAR (#3) THRU THE OPENING ON THE SIDE OF UNIT. THIS ADJUSTMENT IS MADE WITH THE SUPPLIED HEX KEY (#45).

WHEN MAKING HEIGHT ADJUSTMENTS BE SURE TO HOLD UP ON THE HEATING UNIT BEFORE LOOSENING THE SET SCREW IN THE POLE ARM COLLAR.



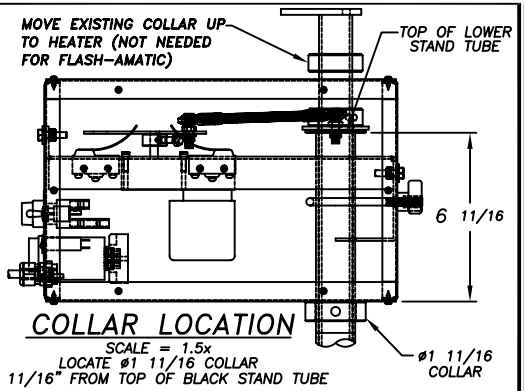
FAILURE TO HOLD THE HEATER WHILE LOOSENING THE COLLAR WILL RESULT IN THE HEATER FALLING ONTO THE TOP OF THE FLASH-A-MATIC AND COULD RESULT IN INJURY IF THE HEATER FALLS ONTO YOUR HAND.

ADJUSTMENTS CAN BE MADE BY INSERTING SUPPLIED HEX KEY (#45) THROUGH SLOT IN ACCESS PANEL (#7) AND LOOSENING THE SET SCREW IN ITEM #3, MAKE ADJUSTMENTS AND TIGHTEN SET SCREW SECURELY.

CAUTION: WHEN ADJUSTING HEIGHT ALWAYS BE SURE THAT HEATER IS MOUNTED 90° TO RIGHT OF BOX FRONT AT REST.

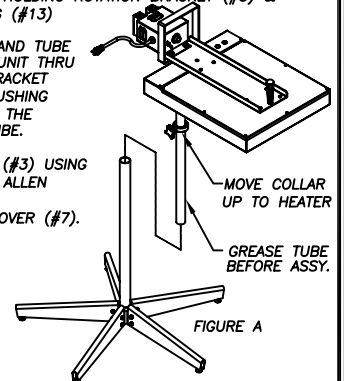
DURING OPERATION THE MOTOR AND CONTROL BOX SHOULD NEVER BE DIRECTLY UNDER HEATER!!

50	78-582	1	3 CONTACT HOLDER
49	16-302	2	CABLE TIE
48	16-300	4	CABLE TIE
47	25-193	2	SCREW #6 SMSPH x .38L
46	82-926	1	RELAY
45	97-158	1	HEX KEY 3/16", T-HANDLE
44	15-202	1	LABEL, BLACK BODY SERIAL # & POWER
43	23-008	2	LOCKWASHER 5/16"
42	25-009	1	BOLT 1/4-20 x 5/8"L
41	87-011	4	WIRE NUT, BLUE
40	N/A	1	NUT, ROUND FOR SWITCH
39	N/A	1	NUT, HEX FOR SWITCH
38	22-072	1	STRAIN RELIEF, NYLON, DOMED, 1/2" NPT
37	BFA02-WIRE	1	WIRE KIT BFA
36	90-490	1	CORD SPT-2, 18/3, 8'L
35	22-070	1	STRAIN RELIEF SR20-1 "HEYCO" #1424
34	97-157	1	FOOTSWITCH, W/ 15' 18/3 CORD
33	97-148	1	SWITCH ON/OFF
32	78-901	2	LIMIT SWITCH 2 POLE MICRO SWITCH
31	78-570	1	CONTACT 1 N.O. 22MM ABB
30	78-571	2	CONTACT 1 N.C.
29	78-568	1	SELECTOR SWITCH 2 POSITION, MAINTAINED BK, 22MM
28	73-278	1	CIRCUIT BREAKER, 1 POLE, 2 AMP, PANEL MOUNT
27	79-035	1	TIMER BASE, OCTAL 8-PIN SOCKET
26	79-037	1	TIMER / DWELL, 120 COIL, 60 SEC, 1/16 DIN
25	25-192	4	WASHER #6 INTERNAL STAR "LOCK WASHER"
24	24-018	4	NUT #6-32 HEX
23	23-003	4	WASHER FLAT 1/4" TPA, BLACK OXIDE
22	23-005	4	WASHER LOCK 1/4" SPLIT, BLACK OXIDE
21	24-004	4	NUT 1/4-20 HEX BLACK OXIDE
20	24-010	3	NUT 5/16-24 HEX ZINC
19	25-191	4	SCREW #6-32 x 1.0"L PAN HEAD
18	25-243	4	SCREW 10-32 x 1/2"L TAPTITE
17	25-189	1	THREADED ROD 5/16-24 x 5.50"L
16	25-188	4	BOLT 1/4-20 x 1.0"L HEX HEAD, BLACK OXIDE
15	25-003	18	SCREW #10 x 3/4"L PHSMS, PR, TPA, BLACK OXIDE
14	97-162	1	COLLAR 1.6875", W/ SET SCREW
13	97-152	1	BEARING BRONZE, 1.5 ID x 2.5 OD x 1/8" THK.
12	93-007	2	KNOB 5/16-18 THRU INSERT, 3 FLUTE
11	08-245	1	MOTOR 115V, 6 RPM, 525:1 RATIO, 1/60 HP W/ BRAKE
10	97-163	2	COUPLER, FEMAL ROD END, W/ SHAFT
9	BFA02-09	1	U-BOLT 5/16-18 x 2.13 CENTER, 4.5" I.S.
8	BFA02-08	1	FACE PLATE "MYLAR"
7	BFA02-07	1	SIDE COVER PLATE
6	BFA02-06	1	INNER SUPPORT BRACKET
5	BFA02-05	1	END COVER "FRONT"
4	BFA02-04	1	OUTER SHELL
3	BFA02-03	1	ROTATION BRACKET 2 "TUBE BRACKET"
2	BFA02-02	1	ROTATION BRACKET 1 "MOTOR BRACKET"
1	BFA02-01	1	END COVER "BACK"



ASSEMBLY INSTRUCTIONS

- IF CURRENTLY USING BF STAND SEE FIGURE A.
- INSTALL SUPPLIED #1 11/16 COLLAR (#14) ON FLASH STAND BASE ASSEMBLY 6 11/16" FROM TOP OF TUBE USING SUPPLIED 3/16" ALLEN WRENCH. (SEE DETAIL ABOVE)
- REMOVE SIDE COVER (#7) OF BFA UNIT.
- INSTALL ASSEMBLED FLASH-AMATIC ONTO THE LOWER BLACK STAND TUBE USING U-BOLT (#9) PROVIDED. THE FLASH-A-MATIC WILL REST ON THE 1-11/16" I.D. COLLAR (#14) ALREADY POSITIONED IN STEP #2.
- REMOVE WIRE TIE HOLDING ROTATION BRACKET (#3) & BRONZE BUSHING (#13) TOGETHER.
- INSERT UPPER STAND TUBE IN TOP OF BFA UNIT THRU THE ROTATION BRACKET (#3), BRONZE BUSHING (#13), AND INTO THE LOWER STAND TUBE.
- TIGHTEN ROTATING BRACKET SCREW (#3) USING SUPPLIED 3/16" ALLEN WRENCH (#45).
- REINSTALL SIDE COVER (#7).



ITEM	PART NO.	QN	DESCRIPTION	
LET. NO.	REVISION	IN	CK	DATE
B	COLLAR WAS SET AT 7.0	JRW		10/7/08
C	DELETED #4 SCREWS, ADDED #6 SCREWS	JRW		12/24/08
D	ITEM #28 WAS 5 AMP	JRW		6/29/09

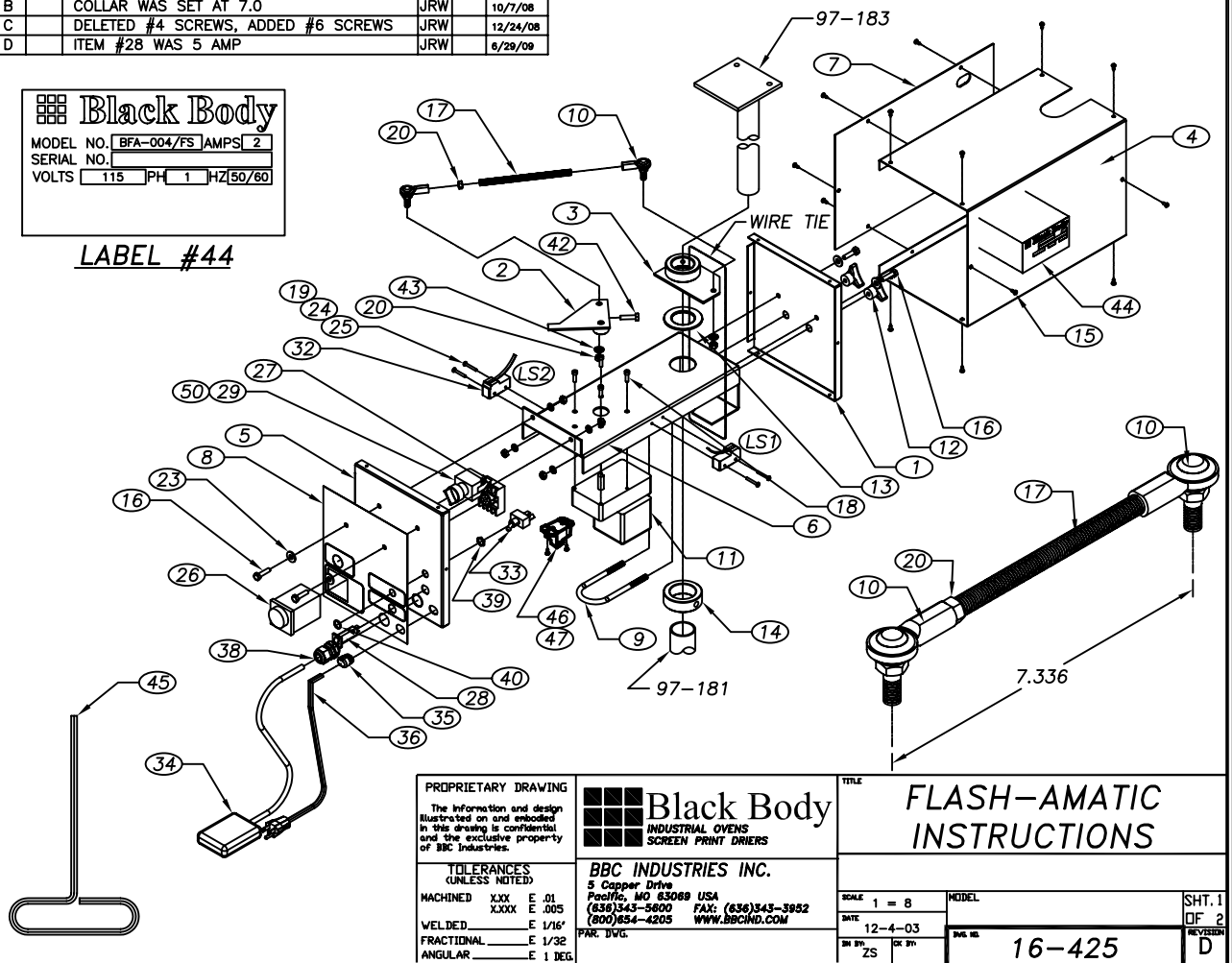
Black Body

MODEL NO. BFA-004/FS AMP(S) 2

SERIAL NO. _____

VOLTS 115 PH 1 HZ 50/60

LABEL #44



Black Body
INDUSTRIAL OVENS
SCREEN PRINT DRIVERS

BBC INDUSTRIES INC.
5 Copper Drive
Pacifica, MO 63069 USA
(836)343-5600 FAX: (836)343-3982
(800)854-4205 WWW.BBCIND.COM
PARK DIV.

FLASH-AMATIC INSTRUCTIONS

SCALE 1 = 8 MODEL

DATE 12-4-03

SH. 1 OF 2

REV. 16-425

D