



LITTLE BUDDY™



LB17-2000

5' Conveyor
18" Belt Width
30" Chamber
1941 W
16.2 A
120 V

LB20-3500

5' Conveyor
24" Belt Width
30" Chamber
3500 W
14.5 A
240 V, 1 P

Available in
CE



24"
Belt Width



No Crating
Fee



Built-in Dial
Speed Control



Built-in Dial
Temp Control

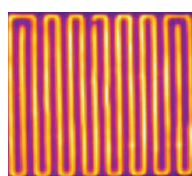


Includes
TruTrak® Belt

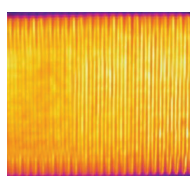
The Little Buddy Conveyor Dryer by BBC Industries is the ideal dryer for small shops, short runs, garage shops, and on-site printers. A great finisher, compact, light weight, portable, and versatile, it can cure 150+ shirts per hour. As the #1 used and recommended entry level conveyor dryer, the Little Buddy is designed for production and consistency at affordable prices. The BBC LB Table Top Series uses proprietary, highly efficient BBC infrared panels which provide the most even and efficient heat distribution available on the market today. Don't believe us? See for yourself below. With edge-to-edge heat coverage, the LB Dryer cures the largest print images in its class. BBC knows your time is precious and you don't want to waste it fussing with belt tracking issues so the LB Dryer come standard with the BBC TruTrak belt tracking system. Set it and forget it! As the ONLY electric infrared heat manufacture in the industry, BBC KNOWS HEAT.

SEE FOR YOURSELF!

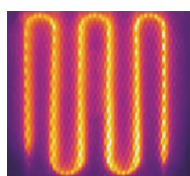
Below are actual infrared comparisons between BBC heaters and our competitors.



COMPETITOR 1



BBC
INDUSTRIES, INC.



COMPETITOR 2

Production rates are based on the following:
(times may vary based on process)

LB17-2000		Dwell Time	Shirts per hour		
Plastisol		40s	110	130	150
Process Examples	18"x24"				
	20"x24"				
	18"x18"				
LB20-3500		Dwell Time	Shirts per hour		
Plastisol		30s	150	180	200
Process Examples	24"x20"				
	20"x24"				
	18"x18"				