



Instructions for Installing Safety Bumper Switches

ORIGINAL DOCUMENT

The purpose of the safety bumper switch is to detect an obstruction below the oven when the chamber is being lowered, and reverse its travel to the full up position. This minimizes the potential for damage to the product or fire. The safety bumper switches are mounted around the bottom of the oven perimeter and have to be shipped loose for field installation given the high likelihood for damage if pre-installed.

Mounting

Dual safety bumpers are installed on the oven ends where the product enters and exits the chamber (**fig. 1**). Single safety bumpers are installed on the oven sides parallel to the product flow (**fig. 1**).

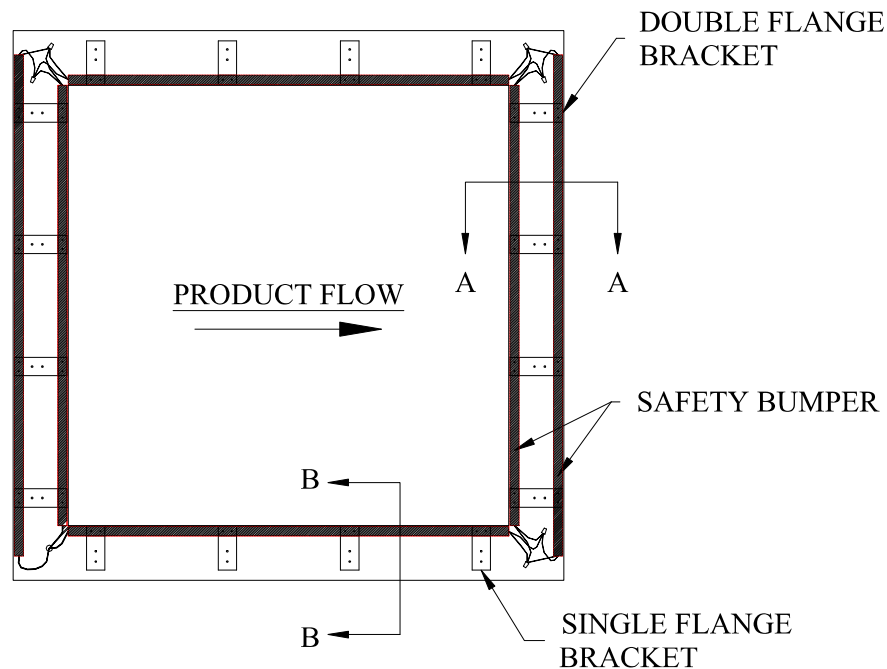
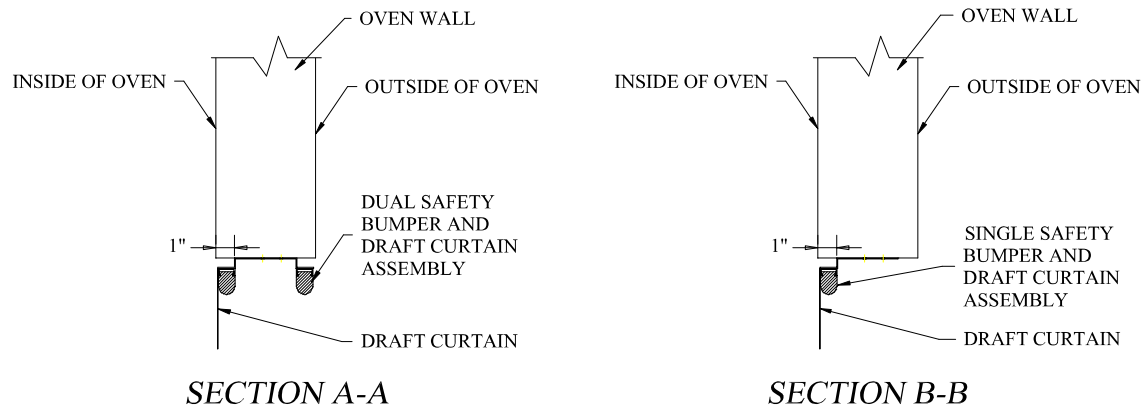


FIGURE 1

The safety bumpers should be centered lengthwise on oven bottom mounting surface, with the vertical portion of the mounting bracket spaced 1" in from the oven interior (**sections A-A & B-B**). **Note:** It is very important that the draft curtain is oriented toward the **inside** of the oven to prevent damaging the safety bumper from exposure to the heating elements



Attach the safety bumpers using #10 self-drilling screws supplied with the bumpers (**fig. 2**).

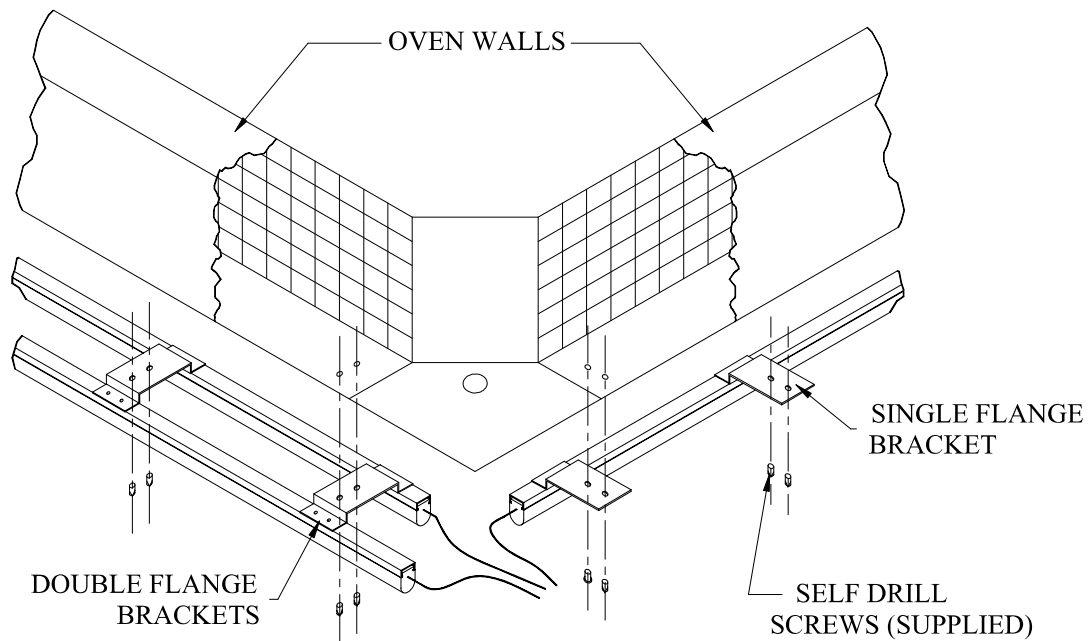


FIGURE 2

Wiring

Using the “quick-connect” terminals provided on the ends of each lead coming from the safety bumper, interconnect all 4 sections of the safety bumper (**fig. 3**).

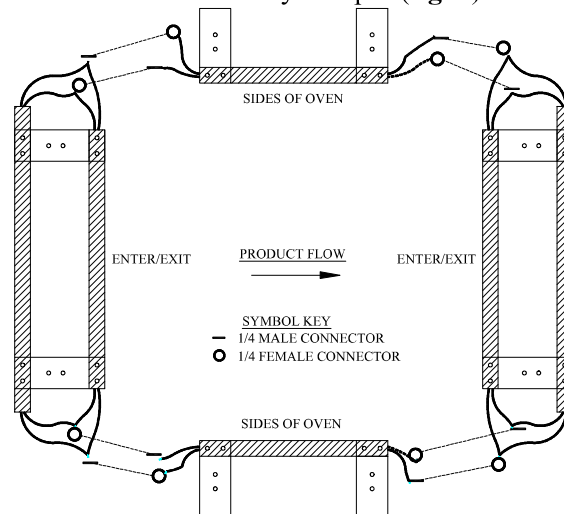


FIGURE 3

Locate the lower oven corner with the junction box. This will be where the cable track is installed between the oven gantry and the oven chamber. Remove the interior cover by lifting it out the guides (**fig. 4**). Inside will be 2 high temperature leads marked for safety bumpers. Thread these leads through a hole located in the bottom panel of the corner enclosure. Reinstall the interior corner cover.

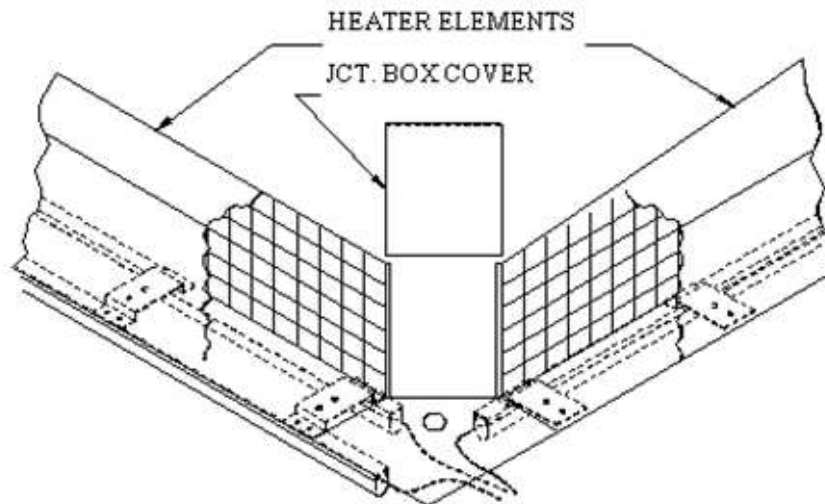


FIGURE 4
HEATER RING JCT.
BOX CORNER

Cut the “quick-connect” terminals off and strip the safety bumper leads at that corner such that they can be connected to the 2 high temperature leads protruding through the bottom of the corner with wire nuts as provided. **Note:** The safety bumper leads must not enter the corner enclosure because that wire is not rated to withstand the high temperatures.

Coil and wire tie the connected wires at each corner into a neat loop that prevents “snagging” objects below the bumpers or touching the oven. The system is now ready for test.